



11/3/2015

Worklist: 891

<u>LAB CASE</u>	<u>ITEM</u>	<u>TASK ID</u>	<u>DESCRIPTION</u>	
M2015-2859	1	44546	6.1.2 Blood Cannabinoids by Lt	
M2015-3180	1	44551	6.1.2 Blood Cannabinoids by Lt	
M2015-3430	1	44552	6.1.2 Blood Cannabinoids by Lt	
P2015-2006	1	44553	6.1.2 Blood Cannabinoids by Lt	
P2015-2088	2	44555	6.1.2 Blood Cannabinoids by Lt	
P2015-2128	1	44559	6.1.2 Blood Cannabinoids by Lt	
P2015-2191	1	44562	6.1.2 Blood Cannabinoids by Lt	
P2015-2208	1	44565	6.1.2 Blood Cannabinoids by Lt	
P2015-2209	1	44567	6.1.2 Blood Cannabinoids by Lt	
P2015-2243	1	44570	6.1.2 Blood Cannabinoids by Lt	
P2015-2248	1	44573	6.1.2 Blood Cannabinoids by Lt	
P2015-2267	1	44574	6.1.2 Blood Cannabinoids by Lt	

Also included P2015-1673-2, P2015-1677-1, and P2015-1794-1 

Reviewed on 11/04/2015 by DND. 

Reviewed on 11-5-15 by BAW 

Worklist Report

Worklist Path:	I:\CDA\CANN_BZ_Blood_DD_CS_10302015cda.wkl
Date Modified:	11/03/2015 09:43:57 AM
Date Printed:	11/03/2015 12:00:50 PM

Worklist Run Parameters

Operator Name:	62340
Run Type:	Standard Start
Part of Method to Run:	Acquisition Only
Execution for Acquisition-DA:	Synchronous
Acquisition Method Path:	D:\MassHunter\Methods
DA Method Path:	D:\MassHunter\methods
Data File Path:	D:\2015 data\Pocatello run 10-30-2015
Pre-Worklist Script:	---
Post-Worklist Script:	SCP_InstrumentStandby(){MH_Acq_Scripts.exe}
Acquisition Clean Up Script:	SCP_InstrumentStandby(){MH_Acq_Scripts.exe}
Overlapped Injection:	No
Clear sample selection after run:	Yes
Wait Time for Ready(Min):	10
Threshold Disk Value(GB):	10
Comment:	---

Plate Barcode Information

Plate	Barcode
P1	
P2	

Worklist Table

Sample Position	Sample Name	Method	Data File	Sample Type	Level Name	Comment	Info.
P1-A1	Blank	isp cannabinoids 103015.m	dd-Cann-Blank1-r001.d	Blank		AM 6.1.2 Cannabinoids by LCQQQ	
P1-A1	Blank	isp cannabinoids 103015.m	dd-Cann-Blank2-r001.d	Blank		AM 6.1.2 Cannabinoids by LCQQQ	
P1-A2	Blood: 1_5 ng/mL	isp cannabinoids 103015.m	dd-Cann-B_CAL1-r001.d	Calibration	1	AM 6.1.2 Cannabinoids by LCQQQ	c-THC @5ng/mL, all others @1 ng/mL
P1-A3	Blood: 2_10 ng/mL	isp cannabinoids 103015.m	dd-Cann-B_CAL2_r001.d	Calibration	2	AM 6.1.2 Cannabinoids by LCQQQ	c-THC @10ng/mL, all others @2 ng/mL
P1-A4	Blood: 5_25 ng/mL	isp cannabinoids 103015.m	dd-Cann-B_CAL3_r001.d	Calibration	3	AM 6.1.2 Cannabinoids by LCQQQ	c-THC @25ng/mL, all others @5 ng/mL
P1-A5	Blood: 10_50 ng/mL	isp cannabinoids 103015.m	dd-Cann-B_CAL4_r001.d	Calibration	4	AM 6.1.2 Cannabinoids by LCQQQ	c-THC @50ng/mL, all others @10 ng/mL
P1-A6	Blood: 25_125 ng/mL	isp cannabinoids 103015.m	dd-Cann-B_CAL5_r001.d	Calibration	5	AM 6.1.2 Cannabinoids by LCQQQ	c-THC @125ng/mL, all others @25 ng/mL
P1-A7	Blood: 50_250 ng/mL	isp cannabinoids 103015.m	dd-Cann-B_CAL6_r001.d	Calibration	6	AM 6.1.2 Cannabinoids by LCQQQ	c-THC @250ng/mL, all others @50 ng/mL
P1-A8	Blood: 100_500 ng/mL	isp cannabinoids 103015.m	dd-Cann-B_CAL7_r001.d	Calibration	7	AM 6.1.2 Cannabinoids by LCQQQ	c-THC @500ng/mL, all others @100 ng/mL
P1-A1	Blank	isp cannabinoids 103015.m	dd-Cann-Carryover blank1_r001.d	Blank		AM 6.1.2 Cannabinoids by LCQQQ	
P1-A9		isp cannabinoids 103015.m	dd-Cann-B-NC-r001.d	Sample			

Sample Position	Sample Name	Method	Data File	Sample Type	Level Name	Comment	Info.
	Blood Negative Control					AM 6.1.2 Cannabinoids by LCQQQ	Negative Blood UTAK Lot B0689
P1-B1	Blood 3_15ngmL	isp cannabinoids 103015.m	dd-Cann-B-3_15-r001.d	Sample		AM 6.1.2 Cannabinoids by LCQQQ	c-THC @15ng/mL, all others @3 ng/mL
P1-A9	Blank M2015-3147-1	isp cannabinoids 103015.m	dd-Cann-M2015-3147-1_BLK_r001.d	Blank		AM 6.1.2 Cannabinoids by LCQQQ	
P1-B2	M2015-3147-1	isp cannabinoids 103015.m	dd-Cann-M2015-3147-1-r001.d	Sample		AM 6.1.2 Cannabinoids by LCQQQ	Blood
P1-A9	Blank M2015-3227-1	isp cannabinoids 103015.m	dd-Cann-M2015-3227-1_BLK_r001.d	Blank		AM 6.1.2 Cannabinoids by LCQQQ	
P1-B3	M2015-3227-1	isp cannabinoids 103015.m	dd-Cann-M2015-3227-1-r001.d	Sample		AM 6.1.2 Cannabinoids by LCQQQ	Blood
P1-A9	Blank M2015-3237-2	isp cannabinoids 103015.m	dd-Cann-M2015-3237-2_BLK_r001.d	Blank		AM 6.1.2 Cannabinoids by LCQQQ	
P1-B4	M2015-3237-2	isp cannabinoids 103015.m	dd-Cann-M2015-3237-2-r001.d	Sample		AM 6.1.2 Cannabinoids by LCQQQ	Blood
P1-A9	Blank M2015-3289-1	isp cannabinoids 103015.m	dd-Cann-M2015-3289-1_BLK_r001.d	Blank		AM 6.1.2 Cannabinoids by LCQQQ	
P1-B5	M2015-3289-1	isp cannabinoids 103015.m	dd-Cann-M2015-3289-1-r001.d	Sample		AM 6.1.2 Cannabinoids by LCQQQ	Blood
P1-A9	Blank M2015-3360-1	isp cannabinoids 103015.m	dd-Cann-M2015-3360-1_BLK_r001.d	Blank		AM 6.1.2 Cannabinoids by LCQQQ	
P1-B6	M2015-3360-1	isp cannabinoids 103015.m	dd-Cann-M2015-3360-1-r001.d	Sample		AM 6.1.2 Cannabinoids by LCQQQ	Blood
P1-A9	Blank P2015-2017-1	isp cannabinoids 103015.m	dd-Cann-P2015-2017-1_BLK_r001.d	Blank		AM 6.1.2 Cannabinoids by LCQQQ	
P1-B7	P2015-2017-1	isp cannabinoids 103015.m	dd-Cann-P2015-2017-1-r001.d	Sample		AM 6.1.2 Cannabinoids by LCQQQ	Blood
P1-A9	Blank P2015-2018-1	isp cannabinoids 103015.m	dd-Cann-P2015-2018-1_BLK_r001.d	Blank		AM 6.1.2 Cannabinoids by LCQQQ	
P1-B8	P2015-2018-1	isp cannabinoids 103015.m	dd-Cann-P2015-2018-1-r001.d	Sample		AM 6.1.2 Cannabinoids by LCQQQ	Blood
P1-A9	Blank P2015-2068-1	isp cannabinoids 103015.m	dd-Cann-P2015-2068-1_BLK_r001.d	Blank		AM 6.1.2 Cannabinoids by LCQQQ	
P1-B9	P2015-2068-1	isp cannabinoids 103015.m	dd-Cann-P2015-2068-1-r001.d	Sample		AM 6.1.2 Cannabinoids by LCQQQ	Blood
P1-A9	Blank P2015-2083-1	isp cannabinoids 103015.m	dd-Cann-P2015-2083-1_BLK_r001.d	Blank		AM 6.1.2 Cannabinoids by LCQQQ	
P1-C1	P2015-2083-1	isp cannabinoids 103015.m	dd-Cann-P2015-2083-1-r001.d	Sample		AM 6.1.2 Cannabinoids by LCQQQ	Blood
P1-A9	Blank P2015-2092-1	isp cannabinoids 103015.m	dd-Cann-P2015-2092-1_BLK_r001.d	Blank		AM 6.1.2 Cannabinoids by LCQQQ	
P1-C2	P2015-2092-1	isp cannabinoids 103015.m	dd-Cann-P2015-2092-1-r001.d	Sample		AM 6.1.2 Cannabinoids by LCQQQ	Blood
P1-A9	Blank	isp cannabinoids 103015.m	dd-Cann-Carryover blank2_r001.d	Blank		AM 6.1.2 Cannabinoids by LCQQQ	
P1-C3	Blood 25_125ngmL	isp cannabinoids 103015.m	dd-Cann-B-25_125-r001.d	Sample		AM 6.1.2 Cannabinoids by LCQQQ	c-THC @125ng/mL, all others @25 ng/mL
P1-A9		isp cannabinoids 103015.m		Blank			

Sample Position	Sample Name	Method	Data File	Sample Type	Level Name	Comment	Info.
	Blank P2015-2097-1		dd-Cann-P2015-2097-1_BLK_r001.d			AM 6.1.2 Cannabinoids by LCQQQ	
P1-C4	P2015-2097-1	isp cannabinoids 103015.m	dd-Cann-P2015-2097-1-r001.d	Sample		AM 6.1.2 Cannabinoids by LCQQQ	Blood
P1-A9	Blank P2015-2184-1	isp cannabinoids 103015.m	dd-Cann-P2015-2184-1_BLK_r001.d	Blank		AM 6.1.2 Cannabinoids by LCQQQ	
P1-C5	P2015-2184-1	isp cannabinoids 103015.m	dd-Cann-P2015-2184-1-r001.d	Sample		AM 6.1.2 Cannabinoids by LCQQQ	Blood
P1-A9	Blank	isp cannabinoids 103015.m	dd-Cann-Blank3-r001.d	Blank		AM 6.1.2 Cannabinoids by LCQQQ	
P2-A9	Blank	isp cannabinoids 103015.m	cs-Cann-Blank2-r001.d	Blank		AM 6.1.2 Cannabinoids by LCQQQ	
P2-A2	Blood: 1_5 ng/mL	isp cannabinoids 103015.m	cs-Cann-B_CAL1-r001.d	Calibration	1	AM 6.1.2 Cannabinoids by LCQQQ	c-THC @5ng/mL, all others @1 ng/mL
P2-A3	Blood: 2_10 ng/mL	isp cannabinoids 103015.m	cs-Cann-B_CAL2_r001.d	Calibration	2	AM 6.1.2 Cannabinoids by LCQQQ	c-THC @10ng/mL, all others @2 ng/mL
P2-A4	Blood: 5_25 ng/mL	isp cannabinoids 103015.m	cs-Cann-B_CAL3_r001.d	Calibration	3	AM 6.1.2 Cannabinoids by LCQQQ	c-THC @25ng/mL, all others @5 ng/mL
P2-A5	Blood: 10_50 ng/mL	isp cannabinoids 103015.m	cs-Cann-B_CAL4_r001.d	Calibration	4	AM 6.1.2 Cannabinoids by LCQQQ	c-THC @50ng/mL, all others @10 ng/mL
P2-A6	Blood: 25_125 ng/mL	isp cannabinoids 103015.m	cs-Cann-B_CAL5_r001.d	Calibration	5	AM 6.1.2 Cannabinoids by LCQQQ	c-THC @125ng/mL, all others @25 ng/mL
P2-A7	Blood: 50_250 ng/mL	isp cannabinoids 103015.m	cs-Cann-B_CAL6_r001.d	Calibration	6	AM 6.1.2 Cannabinoids by LCQQQ	c-THC @250ng/mL, all others @50 ng/mL
P2-A8	Blood: 100_500 ng/mL	isp cannabinoids 103015.m	cs-Cann-B_CAL7_r001.d	Calibration	7	AM 6.1.2 Cannabinoids by LCQQQ	c-THC @500ng/mL, all others @100 ng/mL
P2-A1	Blank	isp cannabinoids 103015.m	cs-Cann-Carryover blank1_r001.d	Blank		AM 6.1.2 Cannabinoids by LCQQQ	
P2-A9	Blood Negative Control	isp cannabinoids 103015.m	cs-Cann-B-NC-r001.d	Sample		AM 6.1.2 Cannabinoids by LCQQQ	Negative Blood UTAK Lot B0689
P2-B1	Blood 3_15ng/mL	isp cannabinoids 103015.m	cs-Cann-B-3_15-r001.d	Sample		AM 6.1.2 Cannabinoids by LCQQQ	c-THC @15ng/mL, all others @3 ng/mL
P2-A9	Blank M2015-2859-1	isp cannabinoids 103015.m	cs-Cann-M2015-2859-1_BLK_r001.d	Blank		AM 6.1.2 Cannabinoids by LCQQQ	
P2-B2	M2015-2859-1	isp cannabinoids 103015.m	cs-Cann-M2015-2859-r001.d	Sample		AM 6.1.2 Cannabinoids by LCQQQ	Blood
P2-A9	Blank M2015-3180-1	isp cannabinoids 103015.m	cs-Cann-M2015-3180-1_BLK_r001.d	Blank		AM 6.1.2 Cannabinoids by LCQQQ	
P2-B3	M2015-3180-1	isp cannabinoids 103015.m	cs-Cann-M2015-3180-1-r001.d	Sample		AM 6.1.2 Cannabinoids by LCQQQ	Blood
P2-A9	Blank M2015-3430-1	isp cannabinoids 103015.m	cs-Cann-M2015-3430-1_BLK_r001.d	Blank		AM 6.1.2 Cannabinoids by LCQQQ	
P2-B4	M2015-3430-1	isp cannabinoids 103015.m	cs-Cann-M2015-3430-1-r001.d	Sample		AM 6.1.2 Cannabinoids by LCQQQ	Blood
P2-A9		isp cannabinoids 103015.m	cs-Cann-P2015-2006-1_BLK_r001.d	Blank			

Sample Position	Sample Name	Method	Data File	Sample Type	Level Name	Comment	Info.
	Blank P2015-2006-1					AM 6.1.2 Cannabinoids by LCQQQ	
P2-B5	P2015-2006-1	isp cannabinoids 103015.m	cs-Cann-P2015-2006-1-r001.d	Sample		AM 6.1.2 Cannabinoids by LCQQQ	Blood
P2-A9	Blank P2015-2088-2	isp cannabinoids 103015.m	cs-Cann-P2015-2088-2_BLK_r001.d	Blank		AM 6.1.2 Cannabinoids by LCQQQ	
P2-B6	P2015-2088-2	isp cannabinoids 103015.m	cs-Cann-P2015-2088-2-r001.d	Sample		AM 6.1.2 Cannabinoids by LCQQQ	Blood
P2-A9	Blank P2015-2128-1	isp cannabinoids 103015.m	cs-Cann-P2015-2128-11_BLK_r001.d	Blank		AM 6.1.2 Cannabinoids by LCQQQ	
P2-B7	P2015-2128-1	isp cannabinoids 103015.m	cs-Cann-P2015-2128-1-r001.d	Sample		AM 6.1.2 Cannabinoids by LCQQQ	Blood
P2-A9	Blank P2015-2191-1	isp cannabinoids 103015.m	cs-Cann-P2015-2191-1_BLK_r001.d	Blank		AM 6.1.2 Cannabinoids by LCQQQ	
P2-B8	P2015-2191-1	isp cannabinoids 103015.m	cs-Cann-P2015-2191-1-r001.d	Sample		AM 6.1.2 Cannabinoids by LCQQQ	Blood
P2-A9	Blank P2015-2208-1	isp cannabinoids 103015.m	cs-Cann-P2015-2208-1_BLK_r001.d	Blank		AM 6.1.2 Cannabinoids by LCQQQ	
P2-B9	P2015-2208-1	isp cannabinoids 103015.m	cs-Cann-P2015-2208-1-r001.d	Sample		AM 6.1.2 Cannabinoids by LCQQQ	Blood
P2-A9	Blank P2015-2209-1	isp cannabinoids 103015.m	cs-Cann-P2015-2209-1_BLK_r001.d	Blank		AM 6.1.2 Cannabinoids by LCQQQ	
P2-C1	P2015-2209-1	isp cannabinoids 103015.m	cs-Cann-P2015-2209-1-r001.d	Sample		AM 6.1.2 Cannabinoids by LCQQQ	Blood
P2-A9	Blank P2015-2243-1	isp cannabinoids 103015.m	cs-Cann-P2015-2243-1_BLK_r001.d	Blank		AM 6.1.2 Cannabinoids by LCQQQ	
P2-C2	P2015-2243-1	isp cannabinoids 103015.m	cs-Cann-P2015-2243-1-r001.d	Sample		AM 6.1.2 Cannabinoids by LCQQQ	Blood
P2-A1	Blank	isp cannabinoids 103015.m	cs-Cann-Carryover blank2_r001.d	Blank		AM 6.1.2 Cannabinoids by LCQQQ	
P2-C3	Blood 25_125ng/mL	isp cannabinoids 103015.m	cs-Cann-B-25_125-r001.d	Sample		AM 6.1.2 Cannabinoids by LCQQQ	c-THC @125ng/mL, all others @25 ng/mL
P2-A9	Blank P2015-2248-1	isp cannabinoids 103015.m	cs-Cann-P2015-2248-1_BLK_r001.d	Blank		AM 6.1.2 Cannabinoids by LCQQQ	
P2-C4	P2015-2248-1	isp cannabinoids 103015.m	cs-Cann-P2015-2248-1-r001.d	Sample		AM 6.1.2 Cannabinoids by LCQQQ	Blood
P2-A9	Blank P2015-2267-1	isp cannabinoids 103015.m	cs-Cann-P2015-2267-1_BLK_r001.d	Blank		AM 6.1.2 Cannabinoids by LCQQQ	
P2-C5	P2015-2267-1	isp cannabinoids 103015.m	cs-Cann-P2015-2267-1-r001.d	Sample		AM 6.1.2 Cannabinoids by LCQQQ	Blood
P2-A9	Blank P2015-1673-1	isp cannabinoids 103015.m	cs-Cann-P2015-1673-1_BLK_r001.d	Blank		AM 6.1.2 Cannabinoids by LCQQQ	
P2-C6	P2015-1673-1	isp cannabinoids 103015.m	cs-Cann-P2015-1673-1-r001.d	Sample		AM 6.1.2 Cannabinoids by LCQQQ	Blood
P2-A9	Blank P2015-1677-1	isp cannabinoids 103015.m	cs-Cann-P2015-1677-1_BLK_r001.d	Blank		AM 6.1.2 Cannabinoids by LCQQQ	
P2-C7	P2015-1677-1	isp cannabinoids 103015.m	cs-Cann-P2015-1677-1-r001.d	Sample		AM 6.1.2 Cannabinoids by LCQQQ	Blood
P2-A9		isp cannabinoids 103015.m	cs-Cann-P2015-1794-1_BLK_r001.d	Blank			

Sample Position	Sample Name	Method	Data File	Sample Type	Level Name	Comment	Info.
	Blank P2015-1794-1					AM 6.1.2 Cannabinoids by LCQQQ	
P2-C8	P2015-1794-1	isp cannabinoids 103015.m	cs-Cann-P2015-1794-1-r001.d	Sample		AM 6.1.2 Cannabinoids by LCQQQ	Blood
P1-F9	Blank	D:\MassHunter\methods\Benzos_Z_Drugs_ACN_FA_ISP.m	dd-Blank1-r002.d	Blank		AM 6.1.1 Benzo and Z by LCQQQ	
P1-F9	Blank	D:\MassHunter\methods\Benzos_Z_Drugs_ACN_FA_ISP.m	dd-Blank2-r002.d	Blank		AM 6.1.1 Benzo and Z by LCQQQ	
P1-F8	5 ng/mL	D:\MassHunter\methods\Benzos_Z_Drugs_ACN_FA_ISP.m	dd-5 ng/mL-r001.d	Calibration	1	AM 6.1.1 Benzo and Z by LCQQQ	
P1-F7	10 ng/mL	D:\MassHunter\methods\Benzos_Z_Drugs_ACN_FA_ISP.m	dd-10 ng/mL-r001.d	Calibration	2	AM 6.1.1 Benzo and Z by LCQQQ	
P1-F6	25 ng/mL	D:\MassHunter\methods\Benzos_Z_Drugs_ACN_FA_ISP.m	dd-25 ng/mL_r001.d	Calibration	3	AM 6.1.1 Benzo and Z by LCQQQ	
P1-F5	50 ng/mL	D:\MassHunter\methods\Benzos_Z_Drugs_ACN_FA_ISP.m	dd-50 ng/mL_r001.d	Calibration	4	AM 6.1.1 Benzo and Z by LCQQQ	
P1-F4	100 ng/mL	D:\MassHunter\methods\Benzos_Z_Drugs_ACN_FA_ISP.m	dd-100 ng/mL_r001.d	Calibration	5	AM 6.1.1 Benzo and Z by LCQQQ	
P1-F3	500 ng/mL	D:\MassHunter\methods\Benzos_Z_Drugs_ACN_FA_ISP.m	dd-500 ng/mL_r001.d	Calibration	6	AM 6.1.1 Benzo and Z by LCQQQ	
P1-F2	1000 ng/mL	D:\MassHunter\methods\Benzos_Z_Drugs_ACN_FA_ISP.m	dd-1000 ng/mL_r001.d	Calibration	7	AM 6.1.1 Benzo and Z by LCQQQ	
P1-F1	3000 ng/mL	D:\MassHunter\methods\Benzos_Z_Drugs_ACN_FA_ISP.m	dd-3000 ng/mL_r001.d	Calibration	8	AM 6.1.1 Benzo and Z by LCQQQ	
P1-F9	Blank	D:\MassHunter\methods\Benzos_Z_Drugs_ACN_FA_ISP.m	dd-Carryover blank1_r002.d	Blank		AM 6.1.1 Benzo and Z by LCQQQ	
P1-E9	Negative Blood Control	D:\MassHunter\methods\Benzos_Z_Drugs_ACN_FA_ISP.m	dd-NC-B_r001.d	Sample		AM 6.1.1 Benzo and Z by LCQQQ	UTAK Negative Whole Blood LOT B0689
P1-E8	Positive Blood Control	D:\MassHunter\methods\Benzos_Z_Drugs_ACN_FA_ISP.m	dd-PC-B-BZ-r001.d	Sample		AM 6.1.1 Benzo and Z by LCQQQ	200 ng/mL Benzodiazepines Mix Cerilliant lot FE012413-02 in neg LOT B0130
P1-E9	Blank - M2015-3402-2	D:\MassHunter\methods\Benzos_Z_Drugs_ACN_FA_ISP.m	dd-Carryover blank-M2015-3402-2_r001.d	Blank		AM 6.1.1 Benzo and Z by LCQQQ	
P1-E7	M2015-3402-2	D:\MassHunter\methods\Benzos_Z_Drugs_ACN_FA_ISP.m	dd-M2015-3402-2-r001.d	Sample		AM 6.1.1 Benzo and Z by LCQQQ	Blood
P1-E9	Blank - P2015-2018-1	D:\MassHunter\methods\Benzos_Z_Drugs_ACN_FA_ISP.m	dd-Carryover blank-P2015-2018-1_r001.d	Blank		AM 6.1.1 Benzo and Z by LCQQQ	
P1-E6	P2015-2018-1	D:\MassHunter\methods\Benzos_Z_Drugs_ACN_FA_ISP.m	dd-P2015-2018-1-r001.d	Sample		AM 6.1.1 Benzo and Z by LCQQQ	Blood
P1-E9	Blank - P2015-2025-1	D:\MassHunter\methods\Benzos_Z_Drugs_ACN_FA_ISP.m	dd-Carryover blank-P2015-2025-1_r001.d	Blank		AM 6.1.1 Benzo and Z by LCQQQ	
P1-E5	P2015-2025-1	D:\MassHunter\methods\Benzos_Z_Drugs_ACN_FA_ISP.m	dd-P2015-2025-1-r001.d	Sample		AM 6.1.1 Benzo and Z by LCQQQ	Blood
P1-E9	Blank - P2015-2033-1	D:\MassHunter\methods\Benzos_Z_Drugs_ACN_FA_ISP.m	dd-Carryover blank-P2015-2033-1_r001.d	Blank		AM 6.1.1 Benzo and Z by LCQQQ	
P1-E4	P2015-2033-1	D:\MassHunter\methods\Benzos_Z_Drugs_ACN_FA_ISP.m	dd-P2015-2033-1-r001.d	Sample		AM 6.1.1 Benzo and Z by LCQQQ	Blood
P1-E9	Blank - P2015-2034-1	D:\MassHunter\methods\Benzos_Z_Drugs_ACN_FA_ISP.m	dd-Carryover blank-P2015-2034-1_r001.d	Blank		AM 6.1.1 Benzo and Z by LCQQQ	
P1-E3		D:\MassHunter\methods\Benzos_Z_Drugs_ACN_FA_ISP.m		Sample			Blood

Sample Position	Sample Name	Method	Data File	Sample Type	Level Name	Comment	Info.
	P2015-2034-1		dd-P2015-2034-1-r001.d			AM 6.1.1 Benzo and Z by LCQQQ	
P1-E9	Blank - P2015-2083-1	D:\MassHunter\methods\Benzos_Z_Drugs_ACN_FA_ISP.m	dd-Carryover blank-P2015-2083-1_r001.d	Blank		AM 6.1.1 Benzo and Z by LCQQQ	
P1-E2	P2015-2083-1	D:\MassHunter\methods\Benzos_Z_Drugs_ACN_FA_ISP.m	dd-P2015-2083-1-r001.d	Sample		AM 6.1.1 Benzo and Z by LCQQQ	Blood
P1-E9	Blank - P2015-2092-1	D:\MassHunter\methods\Benzos_Z_Drugs_ACN_FA_ISP.m	dd-Carryover blank-P2015-2092-1_r001.d	Blank		AM 6.1.1 Benzo and Z by LCQQQ	
P1-E1	P2015-2092-1	D:\MassHunter\methods\Benzos_Z_Drugs_ACN_FA_ISP.m	dd-P2015-2092-1-r001.d	Sample		AM 6.1.1 Benzo and Z by LCQQQ	Blood
P1-E9	Blank - P2015-2113-1	D:\MassHunter\methods\Benzos_Z_Drugs_ACN_FA_ISP.m	dd-Carryover blank-P2015-2113-1_r001.d	Blank		AM 6.1.1 Benzo and Z by LCQQQ	
P1-D9	P2015-2113-1	D:\MassHunter\methods\Benzos_Z_Drugs_ACN_FA_ISP.m	dd-P2015-2113-1-r001.d	Sample		AM 6.1.1 Benzo and Z by LCQQQ	Blood
P1-E9	Blank - P2015-2123-1	D:\MassHunter\methods\Benzos_Z_Drugs_ACN_FA_ISP.m	dd-Carryover blank-P2015-2123-1_r001.d	Blank		AM 6.1.1 Benzo and Z by LCQQQ	
P1-D8	P2015-2123-1	D:\MassHunter\methods\Benzos_Z_Drugs_ACN_FA_ISP.m	dd-P2015-2123-1-r001.d	Sample		AM 6.1.1 Benzo and Z by LCQQQ	Blood
P1-E9	Blank - P2015-2161-1	D:\MassHunter\methods\Benzos_Z_Drugs_ACN_FA_ISP.m	dd-Carryover blank-P2015-2161-1_r001.d	Blank		AM 6.1.1 Benzo and Z by LCQQQ	
P1-D7	P2015-2161-1	D:\MassHunter\methods\Benzos_Z_Drugs_ACN_FA_ISP.m	dd-P2015-2161-1-r001.d	Sample		AM 6.1.1 Benzo and Z by LCQQQ	Blood
P1-F9	Blank	D:\MassHunter\methods\Benzos_Z_Drugs_ACN_FA_ISP.m	dd-Carryover blank3_r001.d	Blank		AM 6.1.1 Benzo and Z by LCQQQ	
P2-F9	Blank	D:\MassHunter\methods\Benzos_Z_Drugs_ACN_FA_ISP.m	cs-Blank2-r002.d	Blank		AM 6.1.1 Benzo and Z by LCQQQ	
P2-F8	5 ng/mL	D:\MassHunter\methods\Benzos_Z_Drugs_ACN_FA_ISP.m	cs-5 ng/mL-r001.d	Calibration	1	AM 6.1.1 Benzo and Z by LCQQQ	
P2-F7	10 ng/mL	D:\MassHunter\methods\Benzos_Z_Drugs_ACN_FA_ISP.m	cs-10 ng/mL-r001.d	Calibration	2	AM 6.1.1 Benzo and Z by LCQQQ	
P2-F6	25 ng/mL	D:\MassHunter\methods\Benzos_Z_Drugs_ACN_FA_ISP.m	cs-25 ng/mL_r001.d	Calibration	3	AM 6.1.1 Benzo and Z by LCQQQ	
P2-F5	50 ng/mL	D:\MassHunter\methods\Benzos_Z_Drugs_ACN_FA_ISP.m	cs-50 ng/mL_r001.d	Calibration	4	AM 6.1.1 Benzo and Z by LCQQQ	
P2-F4	100 ng/mL	D:\MassHunter\methods\Benzos_Z_Drugs_ACN_FA_ISP.m	cs-100 ng/mL_r001.d	Calibration	5	AM 6.1.1 Benzo and Z by LCQQQ	
P2-F3	500 ng/mL	D:\MassHunter\methods\Benzos_Z_Drugs_ACN_FA_ISP.m	cs-500 ng/mL_r001.d	Calibration	6	AM 6.1.1 Benzo and Z by LCQQQ	
P2-F2	1000 ng/mL	D:\MassHunter\methods\Benzos_Z_Drugs_ACN_FA_ISP.m	cs-1000 ng/mL_r001.d	Calibration	7	AM 6.1.1 Benzo and Z by LCQQQ	
P2-F1	3000 ng/mL	D:\MassHunter\methods\Benzos_Z_Drugs_ACN_FA_ISP.m	cs-3000 ng/mL_r001.d	Calibration	8	AM 6.1.1 Benzo and Z by LCQQQ	
P2-F9	Blank	D:\MassHunter\methods\Benzos_Z_Drugs_ACN_FA_ISP.m	cs-Carryover blank1_r002.d	Blank		AM 6.1.1 Benzo and Z by LCQQQ	
P2-E9	Negative Blood Control	D:\MassHunter\methods\Benzos_Z_Drugs_ACN_FA_ISP.m	cs-NC-B_r001.d	Sample		AM 6.1.1 Benzo and Z by LCQQQ	UTAK Negative Whole Blood LOT B0689
P2-E8	Positive Blood Control	D:\MassHunter\methods\Benzos_Z_Drugs_ACN_FA_ISP.m	cs-PC-B-BZ-r001.d	Sample		AM 6.1.1 Benzo and Z by LCQQQ	200 ng/mL Benzodiazepines Mix Cerilliant lot FE012413-02 in neg LOT B0130
P2-E9		D:\MassHunter\methods\Benzos_Z_Drugs_ACN_FA_ISP.m		Blank			

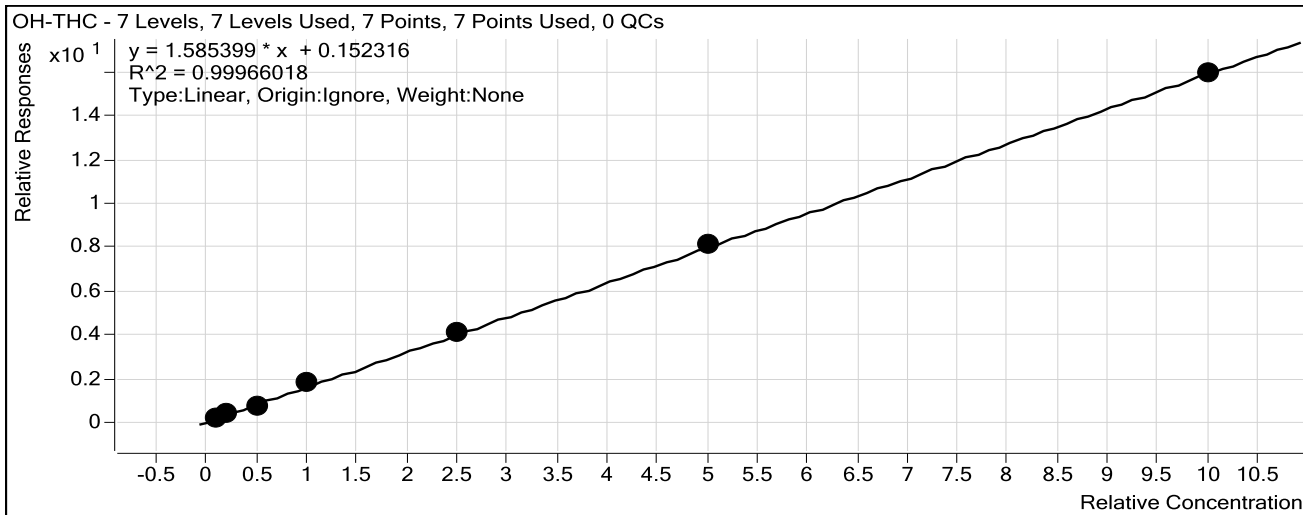
Sample Position	Sample Name	Method	Data File	Sample Type	Level Name	Comment	Info.
	Blank - M2015-3149-1		cs-Carryover blank-M2015-3149-1_r001.d			AM 6.1.1 Benzo and Z by LCQQQ	
P2-E7	M2015-3149-1	D:\MassHunter\methods\Benzos_Z_Drugs_ACN_FA_ISP.m	cs-M2015-3149-1-r001.d	Sample		AM 6.1.1 Benzo and Z by LCQQQ	Blood
P2-E9	Blank - P2015-2088-1	D:\MassHunter\methods\Benzos_Z_Drugs_ACN_FA_ISP.m	cs-Carryover blank-P2015-2088-1_r001.d	Blank		AM 6.1.1 Benzo and Z by LCQQQ	
P2-E6	P2015-2088-1	D:\MassHunter\methods\Benzos_Z_Drugs_ACN_FA_ISP.m	cs-P2015-2088-1-r001.d	Sample		AM 6.1.1 Benzo and Z by LCQQQ	Blood
P2-E9	Blank - P2015-2088-3	D:\MassHunter\methods\Benzos_Z_Drugs_ACN_FA_ISP.m	cs-Carryover blank-P2015-2088-3_r001.d	Blank		AM 6.1.1 Benzo and Z by LCQQQ	
P2-E5	P2015-2088-3	D:\MassHunter\methods\Benzos_Z_Drugs_ACN_FA_ISP.m	cs-P2015-2088-3-r001.d	Sample		AM 6.1.1 Benzo and Z by LCQQQ	Blood
P2-E9	Blank - P2015-2189-1	D:\MassHunter\methods\Benzos_Z_Drugs_ACN_FA_ISP.m	cs-Carryover blank-P2015-2189-1_r001.d	Blank		AM 6.1.1 Benzo and Z by LCQQQ	
P2-E4	P2015-2189-1	D:\MassHunter\methods\Benzos_Z_Drugs_ACN_FA_ISP.m	cs-P2015-2189-1-r001.d	Sample		AM 6.1.1 Benzo and Z by LCQQQ	Blood
P2-E9	Blank - P2015-2191-1	D:\MassHunter\methods\Benzos_Z_Drugs_ACN_FA_ISP.m	cs-Carryover blank-P2015-2191-1_r001.d	Blank		AM 6.1.1 Benzo and Z by LCQQQ	
P2-E3	P2015-2191-1	D:\MassHunter\methods\Benzos_Z_Drugs_ACN_FA_ISP.m	cs-P2015-2191-1-r001.d	Sample		AM 6.1.1 Benzo and Z by LCQQQ	Blood
P2-E9	Blank - P2015-2192-1	D:\MassHunter\methods\Benzos_Z_Drugs_ACN_FA_ISP.m	cs-Carryover blank-P2015-2192-1_r001.d	Blank		AM 6.1.1 Benzo and Z by LCQQQ	
P2-E2	P2015-2192-1	D:\MassHunter\methods\Benzos_Z_Drugs_ACN_FA_ISP.m	cs-P2015-2192-1-r001.d	Sample		AM 6.1.1 Benzo and Z by LCQQQ	Blood
P2-E9	Blank - P2015-2208-1	D:\MassHunter\methods\Benzos_Z_Drugs_ACN_FA_ISP.m	cs-Carryover blank-P2015-2208-1_r001.d	Blank		AM 6.1.1 Benzo and Z by LCQQQ	
P2-E1	P2015-2208-1	D:\MassHunter\methods\Benzos_Z_Drugs_ACN_FA_ISP.m	cs-P2015-2208-1-r001.d	Sample		AM 6.1.1 Benzo and Z by LCQQQ	Blood
P2-E9	Blank - P2015-2209-1	D:\MassHunter\methods\Benzos_Z_Drugs_ACN_FA_ISP.m	cs-Carryover blank-P2015-2209-1_r001.d	Blank		AM 6.1.1 Benzo and Z by LCQQQ	
P2-D9	P2015-2209-1	D:\MassHunter\methods\Benzos_Z_Drugs_ACN_FA_ISP.m	cs-P2015-2209-1-r001.d	Sample		AM 6.1.1 Benzo and Z by LCQQQ	Blood
P2-E9	Blank - P2015-2230-1	D:\MassHunter\methods\Benzos_Z_Drugs_ACN_FA_ISP.m	cs-Carryover blank-P2015-2230-1_r001.d	Blank		AM 6.1.1 Benzo and Z by LCQQQ	
P2-D8	P2015-2230-1	D:\MassHunter\methods\Benzos_Z_Drugs_ACN_FA_ISP.m	cs-P2015-2230-1-r001.d	Sample		AM 6.1.1 Benzo and Z by LCQQQ	Blood
P2-E9	Blank - P2015-2243-1	D:\MassHunter\methods\Benzos_Z_Drugs_ACN_FA_ISP.m	cs-Carryover blank-P2015-2243-1_r001.d	Blank		AM 6.1.1 Benzo and Z by LCQQQ	
P2-D7	P2015-2243-1	D:\MassHunter\methods\Benzos_Z_Drugs_ACN_FA_ISP.m	cs-P2015-2243-1-r001.d	Sample		AM 6.1.1 Benzo and Z by LCQQQ	Blood
P2-E9	Blank - P2015-2247-1	D:\MassHunter\methods\Benzos_Z_Drugs_ACN_FA_ISP.m	cs-Carryover blank-P2015-2247-1_r001.d	Blank		AM 6.1.1 Benzo and Z by LCQQQ	
P2-D6	P2015-2247-1	D:\MassHunter\methods\Benzos_Z_Drugs_ACN_FA_ISP.m	cs-P2015-2247-1-r001.d	Sample		AM 6.1.1 Benzo and Z by LCQQQ	Blood
P2-E9	Blank - P2015-2248-1	D:\MassHunter\methods\Benzos_Z_Drugs_ACN_FA_ISP.m	cs-Carryover blank-P2015-2248-1_r001.d	Blank		AM 6.1.1 Benzo and Z by LCQQQ	
P2-D5	P2015-2248-1	D:\MassHunter\methods\Benzos_Z_Drugs_ACN_FA_ISP.m	cs-P2015-2248-1-r001.d	Sample		AM 6.1.1 Benzo and Z by LCQQQ	Blood
P2-F9	Blank	D:\MassHunter\methods\Benzos_Z_Drugs_ACN_FA_ISP.m	cs-Carryover blank3_r002.d	Blank		AM 6.1.1 Benzo and Z by LCQQQ	

ISP Forensics Calibration Curve Report

Batch Data Path C:\MassHunter\Data\COMBINED\10-30-15\103015 CS\CANN\QuantResults\103015-CANN-B-
CSrevised.batch.bin

Last Calib Update 11/3/2015 12:06 PM **Analyst Name** ISP TOX

Target Compound *OH-THC*
Internal Standard *OH-THC-d3*



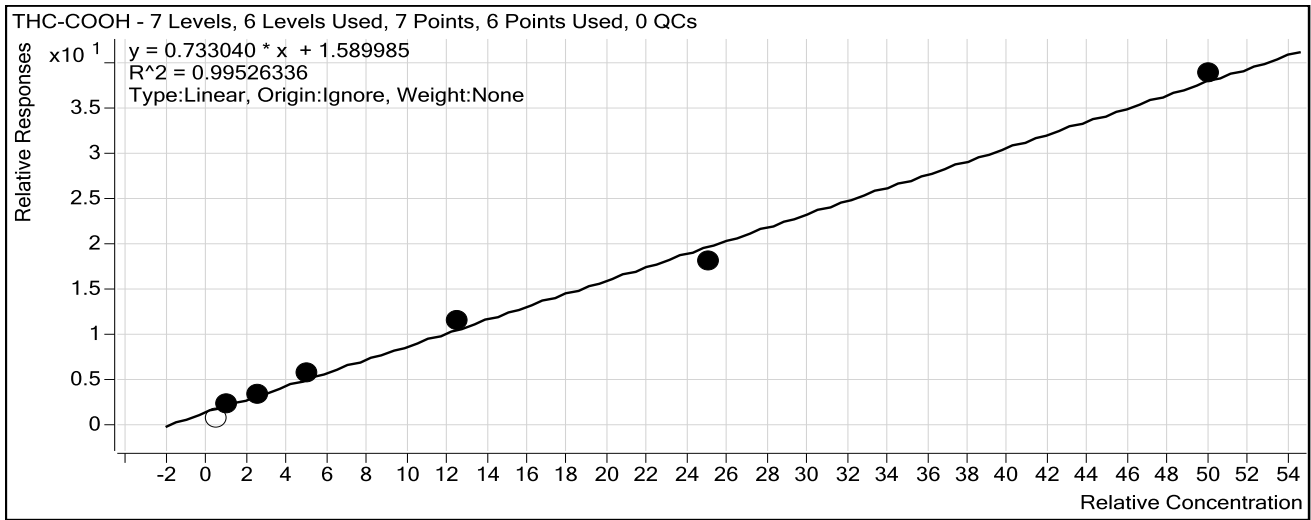
Sample	Level	Enabled	Exp Conc	Final Conc	Accuracy
Blood: 1_5 ng/mL	1	<input checked="" type="checkbox"/>	1	0.8	82.0
Blood: 2_10 ng/mL	2	<input checked="" type="checkbox"/>	2	1.6	81.9
Blood: 5_25 ng/mL	3	<input checked="" type="checkbox"/>	5	4.0	80.6
Blood: 10_50 ng/mL	4	<input checked="" type="checkbox"/>	10	10.9	108.6
Blood: 25_125 ng/mL	5	<input checked="" type="checkbox"/>	25	25.5	102.0
Blood: 50_250 ng/mL	6	<input checked="" type="checkbox"/>	50	50.6	101.2
Blood: 100_500 ng/mL	7	<input checked="" type="checkbox"/>	100	99.5	99.5

ISP Forensics Calibration Curve Report

Batch Data Path C:\MassHunter\Data\COMBINED\10-30-15\103015 CS\CANN\QuantResults\103015-CANN-B-
CSrevised.batch.bin

Last Calib Update 11/3/2015 12:06 PM **Analyst Name** ISP TOX

Target Compound *THC-COOH*
Internal Standard *THC-COOH-d3*



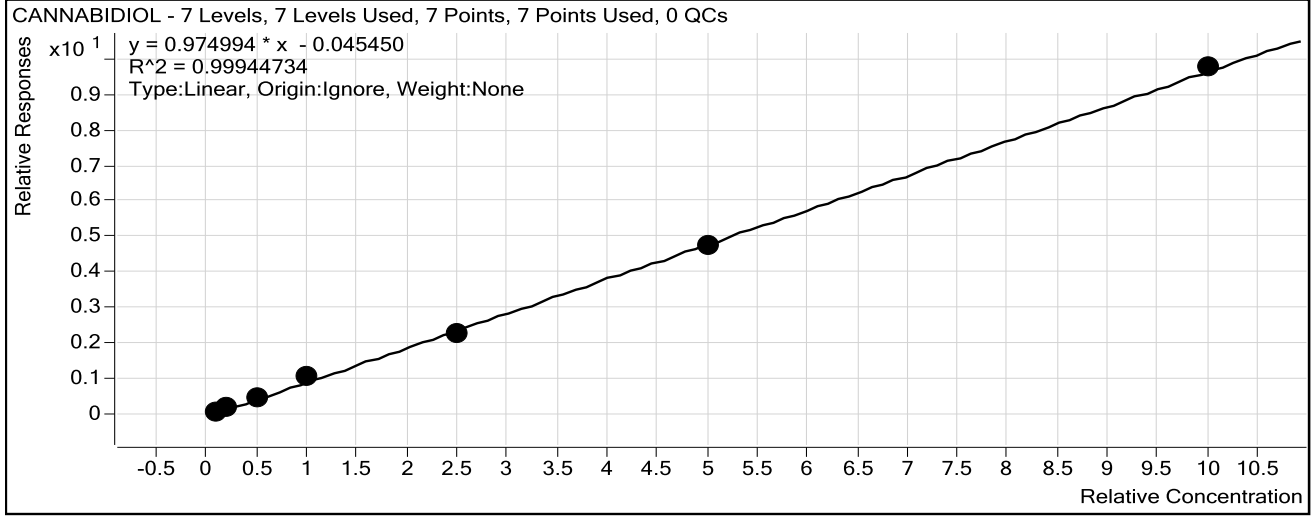
Sample	Level	Enabled	Exp Conc	Final Conc	Accuracy
Blood: 1_5 ng/mL	1	<input type="checkbox"/>	5	0.0	0.0
Blood: 2_10 ng/mL	2	<input checked="" type="checkbox"/>	10	10.8	108.2
Blood: 5_25 ng/mL	3	<input checked="" type="checkbox"/>	25	22.9	91.7
Blood: 10_50 ng/mL	4	<input checked="" type="checkbox"/>	50	55.6	111.2
Blood: 25_125 ng/mL	5	<input checked="" type="checkbox"/>	125	136.2	109.0
Blood: 50_250 ng/mL	6	<input checked="" type="checkbox"/>	250	225.4	90.2
Blood: 100_500 ng/mL	7	<input checked="" type="checkbox"/>	500	509.0	101.8

ISP Forensics Calibration Curve Report

Batch Data Path C:\MassHunter\Data\COMBINED\10-30-15\103015 CS\CANN\QuantResults\103015-CANN-B-
CSrevised.batch.bin

Last Calib Update 11/3/2015 12:06 PM **Analyst Name** ISP TOX

Target Compound CANNABIDIOL
Internal Standard CANNABIDIOL-d3



Sample	Level	Enabled	Exp Conc	Final Conc	Accuracy
Blood: 1_5 ng/mL	1	<input checked="" type="checkbox"/>	1	1.1	113.5
Blood: 2_10 ng/mL	2	<input checked="" type="checkbox"/>	2	2.3	114.7
Blood: 5_25 ng/mL	3	<input checked="" type="checkbox"/>	5	4.9	98.4
Blood: 10_50 ng/mL	4	<input checked="" type="checkbox"/>	10	11.2	111.9
Blood: 25_125 ng/mL	5	<input checked="" type="checkbox"/>	25	23.6	94.6
Blood: 50_250 ng/mL	6	<input checked="" type="checkbox"/>	50	49.2	98.4
Blood: 100_500 ng/mL	7	<input checked="" type="checkbox"/>	100	100.6	100.6

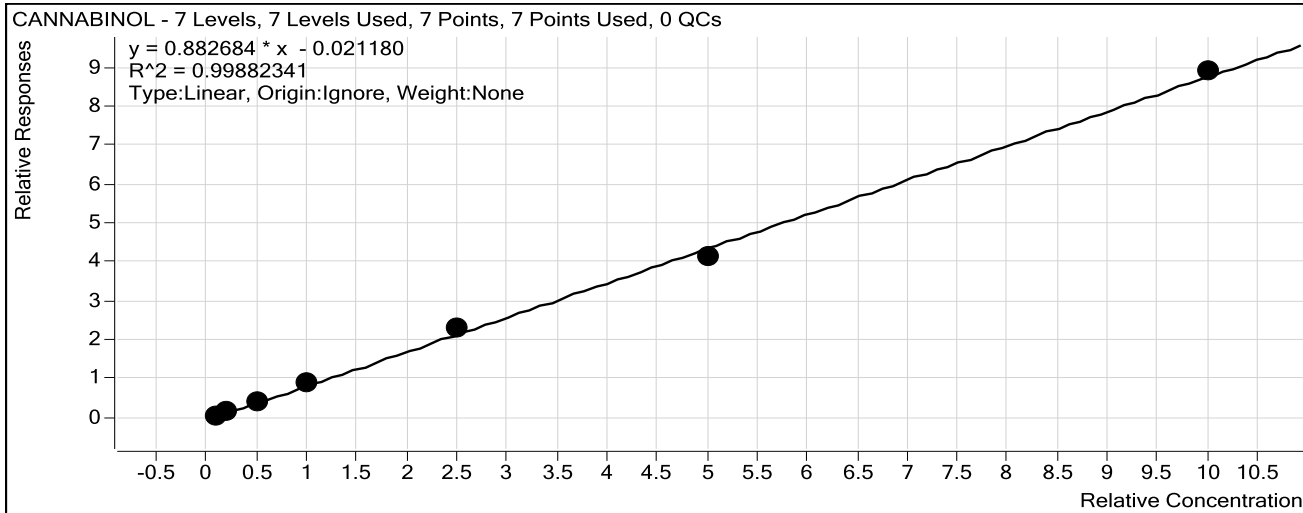
ISP Forensics Calibration Curve Report

Batch Data Path C:\MassHunter\Data\COMBINED\10-30-15\103015 CS\CANN\QuantResults\103015-CANN-B-
CSrevised.batch.bin

Last Calib Update 11/3/2015 12:06 PM **Analyst Name** ISP TOX

Target Compound CANNABINOL

Internal Standard CANNABINOL-d3

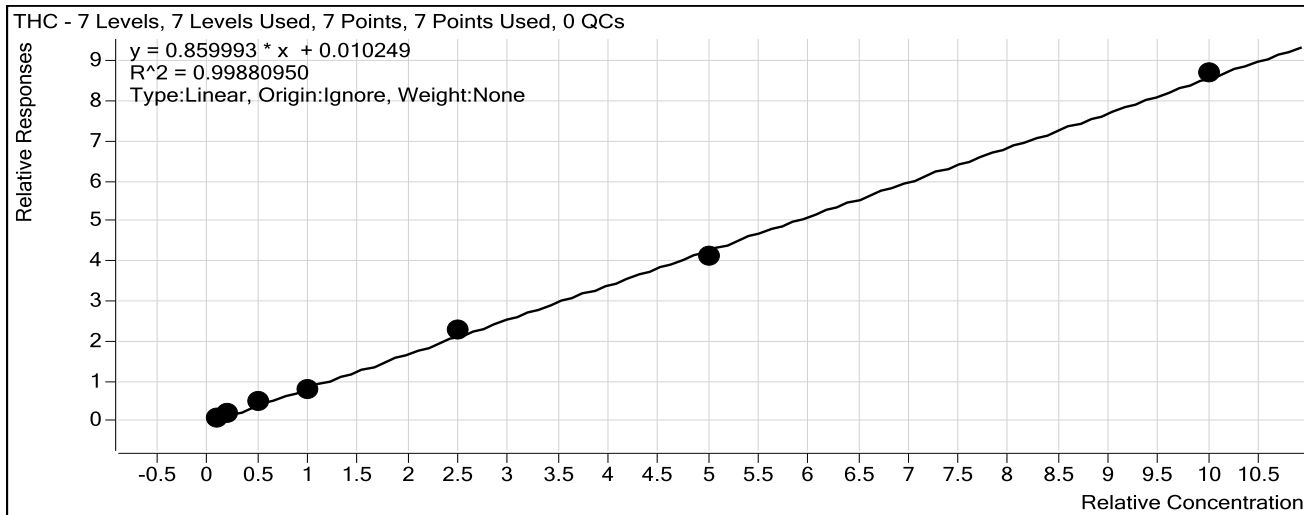


Sample	Level	Enabled	Exp Conc	Final Conc	Accuracy
Blood: 1_5 ng/mL	1	<input checked="" type="checkbox"/>	1	1.0	98.7
Blood: 2_10 ng/mL	2	<input checked="" type="checkbox"/>	2	2.3	114.3
Blood: 5_25 ng/mL	3	<input checked="" type="checkbox"/>	5	5.0	99.3
Blood: 10_50 ng/mL	4	<input checked="" type="checkbox"/>	10	10.1	101.1
Blood: 25_125 ng/mL	5	<input checked="" type="checkbox"/>	25	26.3	105.1
Blood: 50_250 ng/mL	6	<input checked="" type="checkbox"/>	50	47.4	94.8
Blood: 100_500 ng/mL	7	<input checked="" type="checkbox"/>	100	101.0	101.0

ISP Forensics Calibration Curve Report

Batch Data Path C:\MassHunter\Data\COMBINED\10-30-15\103015 CS\CANN\QuantResults\103015-CANN-B-CSrevised.batch.bin
Last Calib Update 11/3/2015 12:06 PM **Analyst Name** ISP TOX

Target Compound *THC*
Internal Standard *THC-d3*



Sample	Level	Enabled	Exp Conc	Final Conc	Accuracy
Blood: 1_5 ng/mL	1	<input checked="" type="checkbox"/>	1	1.1	110.7
Blood: 2_10 ng/mL	2	<input checked="" type="checkbox"/>	2	2.1	104.4
Blood: 5_25 ng/mL	3	<input checked="" type="checkbox"/>	5	5.4	108.1
Blood: 10_50 ng/mL	4	<input checked="" type="checkbox"/>	10	9.5	94.5
Blood: 25_125 ng/mL	5	<input checked="" type="checkbox"/>	25	26.5	106.0
Blood: 50_250 ng/mL	6	<input checked="" type="checkbox"/>	50	47.6	95.1
Blood: 100_500 ng/mL	7	<input checked="" type="checkbox"/>	100	100.9	100.9

ISP FORENSICS

Pocatello

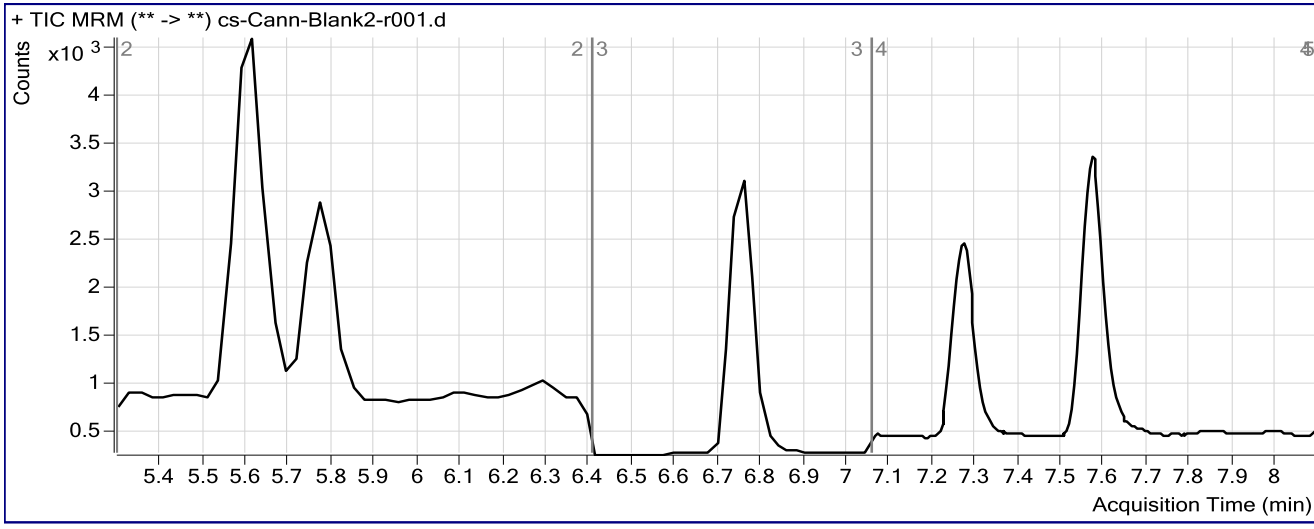
Cannabinoid Analysis Report

Batch Data Path C:\MassHunter\Data\COMBINED\10-30-15\103015 CS\CANN\QuantResults\103015-CANN-B-CSrevised.batch.b
Analysis Time 11/3/2015 12:06 PM **Analyst Name** datastor
Report Time 11/3/2015 12:08 PM **Reporter Name** ISPUser
Last Calib Update 11/3/2015 12:06 PM **Batch State** Processed

Analysis Info

Acq Time 2015-10-30 22:50 **Data File** cs-Cann-Blank2-r001.d
Sample Type Blank **Sample Name** Blank
Dilution 1 **Acq Method** isp cannabinoids 103015.m
Position P2-A9 **Sample Info**
Inj Vol -1 **Comment** AM 6.1.2 Cannabinoids by LCQQQ

Sample Chromatogram



Results

Compound	ISTD Compound	RT	Response	ISTD Resp	Resp Ratio	Final Conc
THC-COOH	THC-COOH-d3	5.770	1181	4920	0.2401	0.0000

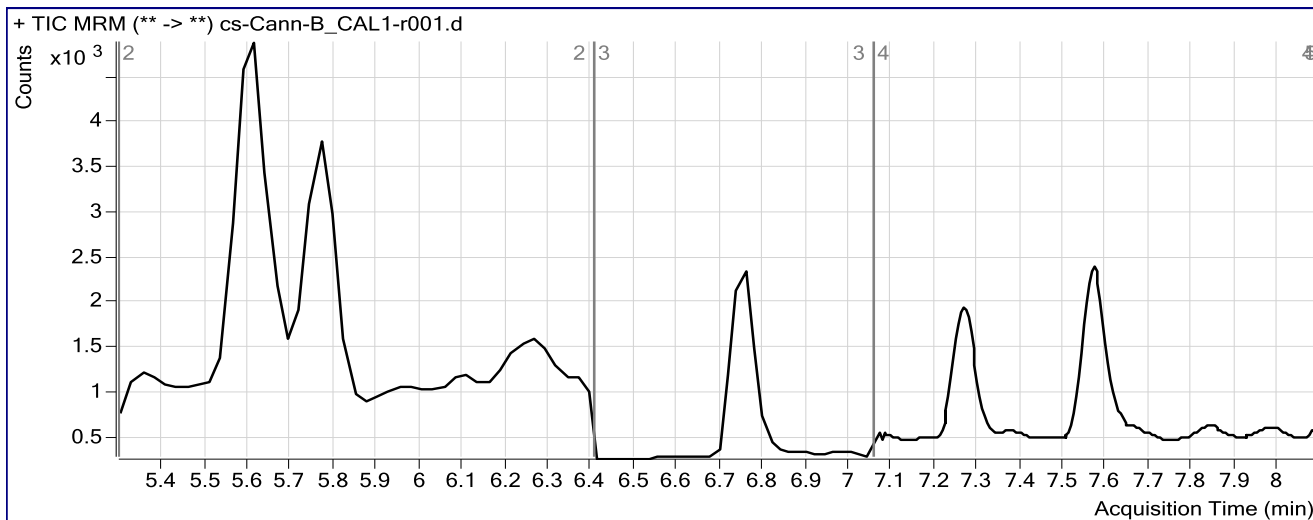
ISP FORENSICS Pocatello Cannabinoid Analysis Report

Batch Data Path C:\MassHunter\Data\COMBINED\10-30-15\103015 CS\CANN\QuantResults\103015-CANN-B-CSrevised.batch.b
Analysis Time 11/3/2015 12:06 PM **Analyst Name** datastor
Report Time 11/3/2015 12:08 PM **Reporter Name** ISPUser
Last Calib Update 11/3/2015 12:06 PM **Batch State** Processed

Analysis Info

Acq Time 2015-10-30 23:03 **Data File** cs-Cann-B_CAL1-r001.d
Sample Type Calibration **Sample Name** Blood: 1_5 ng/mL
Dilution 1 **Acq Method** isp cannabinoids 103015.m
Position P2-A2 **Sample Info** c-THC @5ng/mL, all others @1 ng/mL
Inj Vol -1 **Comment** AM 6.1.2 Cannabinoids by LCQQQ

Sample Chromatogram



Results

Compound	ISTD Compound	RT	Response	ISTD Resp	Resp Ratio	Final Conc
OH-THC	OH-THC-d3	5.617	3511	12436	0.2824	0.8203
THC-COOH	THC-COOH-d3	5.770	2924	3403	0.8593	0.0000
CANNABIDIOL	CANNABIDIOL-d3	6.764	239	3662	0.0652	1.1353
CANNABINOL	CANNABINOL-d3	7.282	268	4063	0.0659	0.9866
THC	THC-d3	7.576	345	3270	0.1055	1.1072

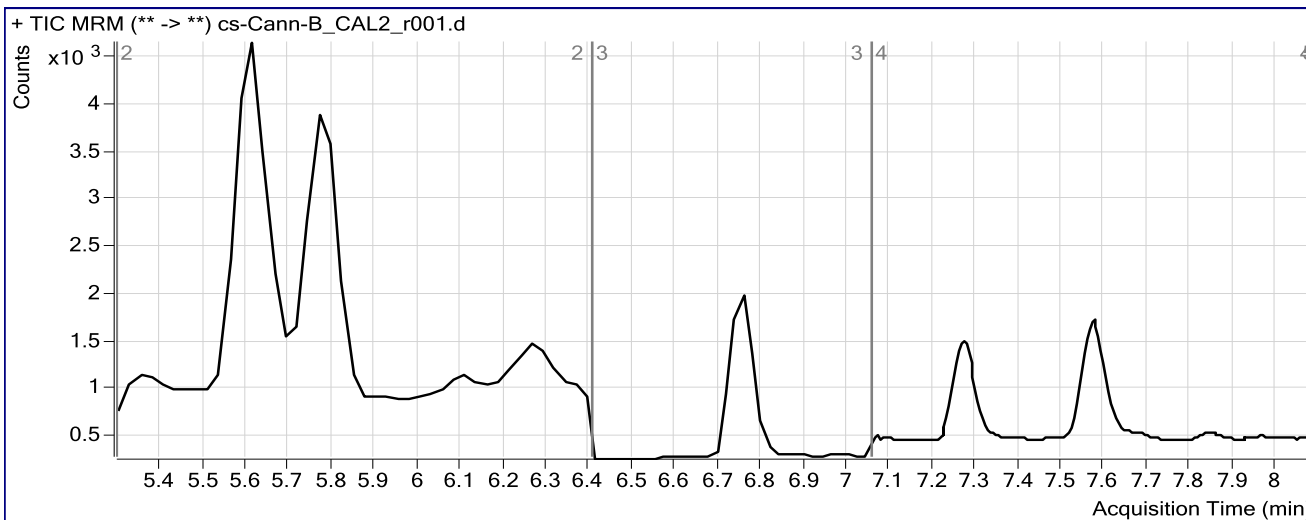
ISP FORENSICS Pocatello Cannabinoid Analysis Report

Batch Data Path C:\MassHunter\Data\COMBINED\10-30-15\103015 CS\CANN\QuantResults\103015-CANN-B-CSrevised.batch.b
Analysis Time 11/3/2015 12:06 PM **Analyst Name** datastor
Report Time 11/3/2015 12:08 PM **Reporter Name** ISPUser
Last Calib Update 11/3/2015 12:06 PM **Batch State** Processed

Analysis Info

Acq Time 2015-10-30 23:16 **Data File** cs-Cann-B_CAL2_r001.d
Sample Type Calibration **Sample Name** Blood: 2_10 ng/mL
Dilution 1 **Acq Method** isp cannabinoids 103015.m
Position P2-A3 **Sample Info** c-THC @10ng/mL, all others @2 ng/mL
Inj Vol -1 **Comment** AM 6.1.2 Cannabinoids by LCQQQ

Sample Chromatogram



Results

Compound	ISTD Compound	RT	Response	ISTD Resp	Resp Ratio	Final Conc
OH-THC	OH-THC-d3	5.617	4339	10534	0.4119	1.6376
THC-COOH	THC-COOH-d3	5.770	4425	1857	2.3832	10.8212
CANNABIDIOL	CANNABIDIOL-d3	6.764	455	2555	0.1782	2.2939
CANNABINOL	CANNABINOL-d3	7.277	440	2436	0.1806	2.2864
THC	THC-d3	7.576	350	1844	0.1897	2.0871

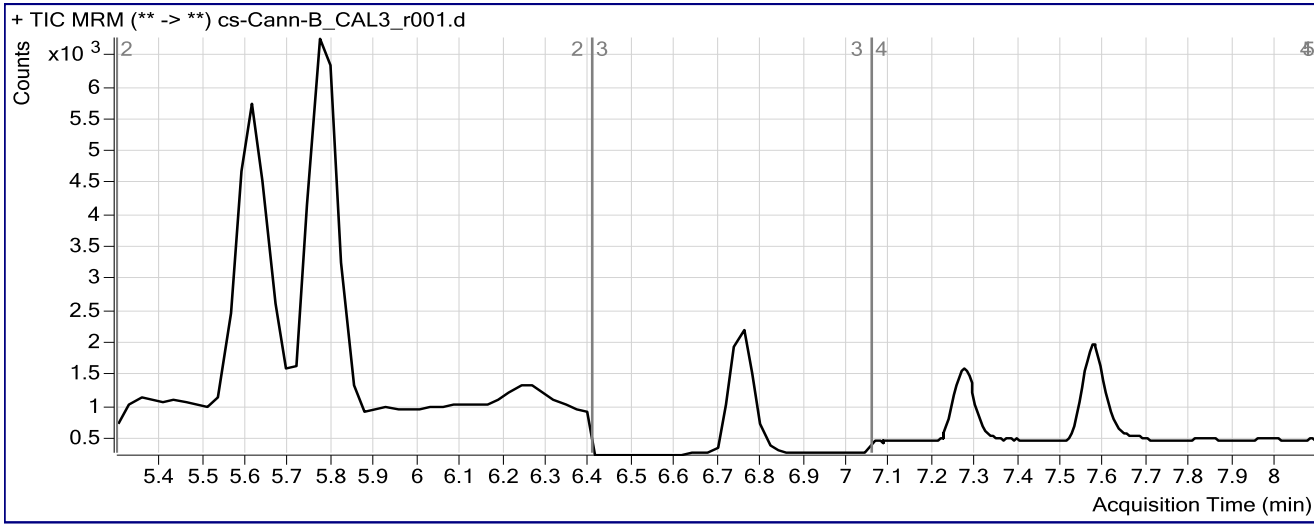
ISP FORENSICS Pocatello Cannabinoid Analysis Report

Batch Data Path C:\MassHunter\Data\COMBINED\10-30-15\103015 CS\CANN\QuantResults\103015-CANN-B-CSrevised.batch.b
Analysis Time 11/3/2015 12:06 PM **Analyst Name** datastor
Report Time 11/3/2015 12:08 PM **Reporter Name** ISPUser
Last Calib Update 11/3/2015 12:06 PM **Batch State** Processed

Analysis Info

Acq Time 2015-10-30 23:29 **Data File** cs-Cann-B_CAL3_r001.d
Sample Type Calibration **Sample Name** Blood: 5_25 ng/mL
Dilution 1 **Acq Method** isp cannabinoids 103015.m
Position P2-A4 **Sample Info** c-THC @25ng/mL, all others @5 ng/mL
Inj Vol -1 **Comment** AM 6.1.2 Cannabinoids by LCQQQ

Sample Chromatogram



Results

Compound	ISTD Compound	RT	Response	ISTD Resp	Resp Ratio	Final Conc
OH-THC	OH-THC-d3	5.617	8810	11139	0.7909	4.0279
THC-COOH	THC-COOH-d3	5.770	10713	3277	3.2696	22.9134
CANNABIDIOL	CANNABIDIOL-d3	6.764	1189	2740	0.4341	4.9190
CANNABINOL	CANNABINOL-d3	7.277	919	2204	0.4170	4.9642
THC	THC-d3	7.576	947	1993	0.4750	5.4047

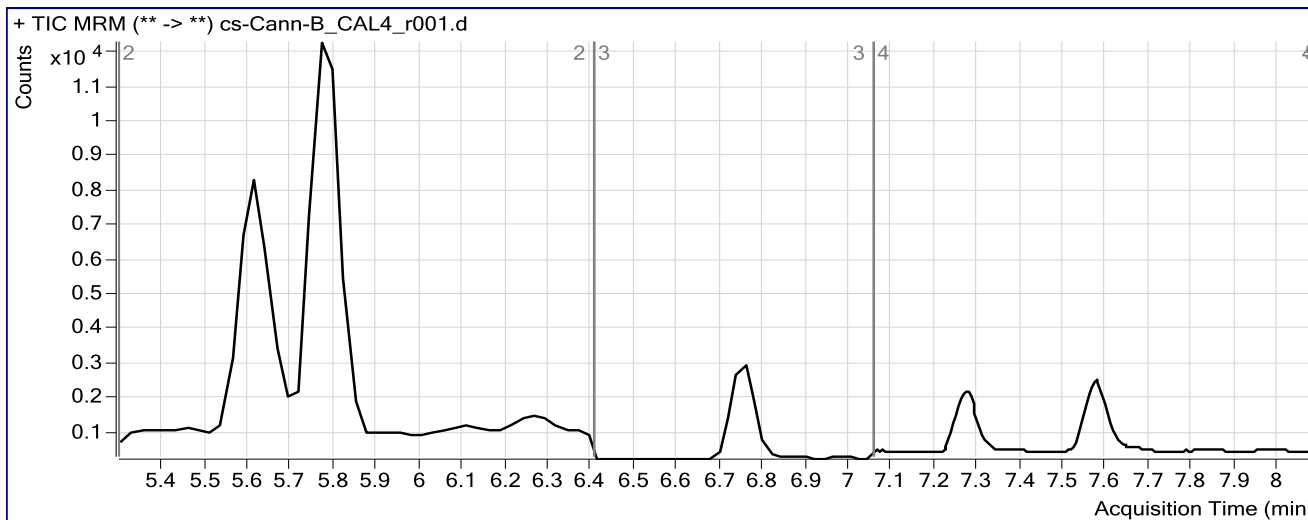
ISP FORENSICS Pocatello Cannabinoid Analysis Report

Batch Data Path C:\MassHunter\Data\COMBINED\10-30-15\103015 CS\CANN\QuantResults\103015-CANN-B-CSrevised.batch.b
Analysis Time 11/3/2015 12:06 PM **Analyst Name** datastor
Report Time 11/3/2015 12:08 PM **Reporter Name** ISPUser
Last Calib Update 11/3/2015 12:06 PM **Batch State** Processed

Analysis Info

Acq Time 2015-10-30 23:43 **Data File** cs-Cann-B_CAL4_r001.d
Sample Type Calibration **Sample Name** Blood: 10_50 ng/mL
Dilution 1 **Acq Method** isp cannabinoids 103015.m
Position P2-A5 **Sample Info** c-THC @50ng/mL, all others @10 ng/mL
Inj Vol -1 **Comment** AM 6.1.2 Cannabinoids by LCQQQ

Sample Chromatogram



Results

Compound	ISTD Compound	RT	Response	ISTD Resp	Resp Ratio	Final Conc
OH-THC	OH-THC-d3	5.617	19854	10595	1.8740	10.8595
THC-COOH	THC-COOH-d3	5.770	20320	3586	5.6663	55.6087
CANNABIDIOL	CANNABIDIOL-d3	6.764	2814	2691	1.0456	11.1907
CANNABINOL	CANNABINOL-d3	7.277	2113	2426	0.8712	10.1098
THC	THC-d3	7.576	1603	1947	0.8233	9.4537

ISP FORENSICS

Pocatello

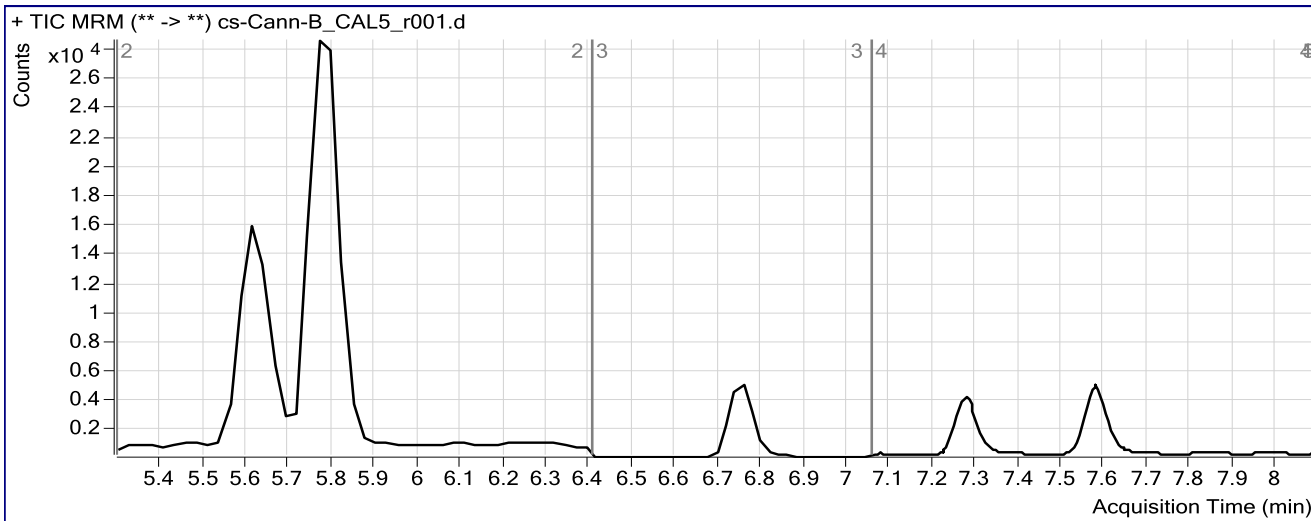
Cannabinoid Analysis Report

Batch Data Path	C:\MassHunter\Data\COMBINED\10-30-15\103015 CS\CANN\QuantResults\103015-CANN-B-CSrevised.batch.b		
Analysis Time	11/3/2015 12:06 PM	Analyst Name	datastor
Report Time	11/3/2015 12:08 PM	Reporter Name	ISPUser
Last Calib Update	11/3/2015 12:06 PM	Batch State	Processed

Analysis Info

Acq Time	2015-10-30 23:56	Data File	cs-Cann-B_CAL5_r001.d
Sample Type	Calibration	Sample Name	Blood: 25_125 ng/mL
Dilution	1	Acq Method	isp cannabinoids 103015.m
Position	P2-A6	Sample Info	c-THC @125ng/mL, all others @25 ng/mL
Inj Vol	-1	Comment	AM 6.1.2 Cannabinoids by LCQQQ

Sample Chromatogram



Results

Compound	ISTD Compound	RT	Response	ISTD Resp	Resp Ratio	Final Conc
OH-THC	OH-THC-d3	5.617	48962	11674	4.1942	25.4945
THC-COOH	THC-COOH-d3	5.770	44481	3843	11.5746	136.2079
CANNABIDIOL	CANNABIDIOL-d3	6.764	7093	3138	2.2601	23.6468
CANNABINOL	CANNABINOL-d3	7.277	6763	2942	2.2986	26.2814
THC	THC-d3	7.576	5126	2238	2.2902	26.5114

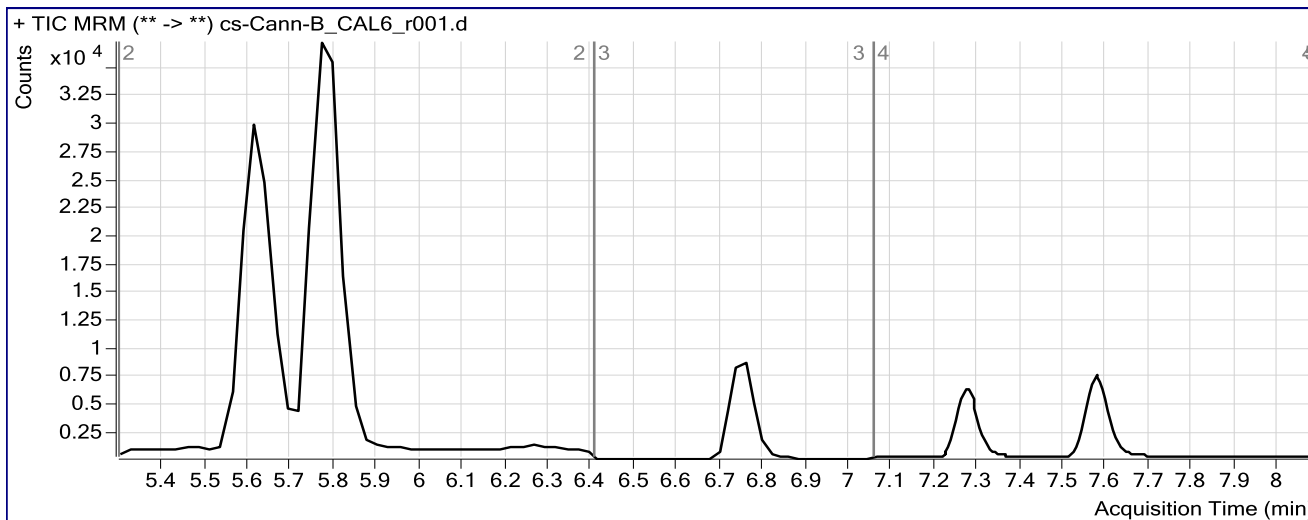
ISP FORENSICS Pocatello Cannabinoid Analysis Report

Batch Data Path C:\MassHunter\Data\COMBINED\10-30-15\103015 CS\CANN\QuantResults\103015-CANN-B-CSrevised.batch.b
Analysis Time 11/3/2015 12:06 PM **Analyst Name** datastor
Report Time 11/3/2015 12:08 PM **Reporter Name** ISPUser
Last Calib Update 11/3/2015 12:06 PM **Batch State** Processed

Analysis Info

Acq Time 2015-10-31 00:09 **Data File** cs-Cann-B_CAL6_r001.d
Sample Type Calibration **Sample Name** Blood: 50_250 ng/mL
Dilution 1 **Acq Method** isp cannabinoids 103015.m
Position P2-A7 **Sample Info** c-THC @250ng/mL, all others @50 ng/mL
Inj Vol -1 **Comment** AM 6.1.2 Cannabinoids by LCQQQ

Sample Chromatogram



Results

Compound	ISTD Compound	RT	Response	ISTD Resp	Resp Ratio	Final Conc
OH-THC	OH-THC-d3	5.617	103241	12624	8.1783	50.6242
THC-COOH	THC-COOH-d3	5.770	70885	3913	18.1162	225.4476
CANNABIDIOL	CANNABIDIOL-d3	6.764	15009	3159	4.7512	49.1966
CANNABINOL	CANNABINOL-d3	7.277	11739	2819	4.1639	47.4135
THC	THC-d3	7.576	9140	2229	4.1008	47.5646

ISP FORENSICS

Pocatello

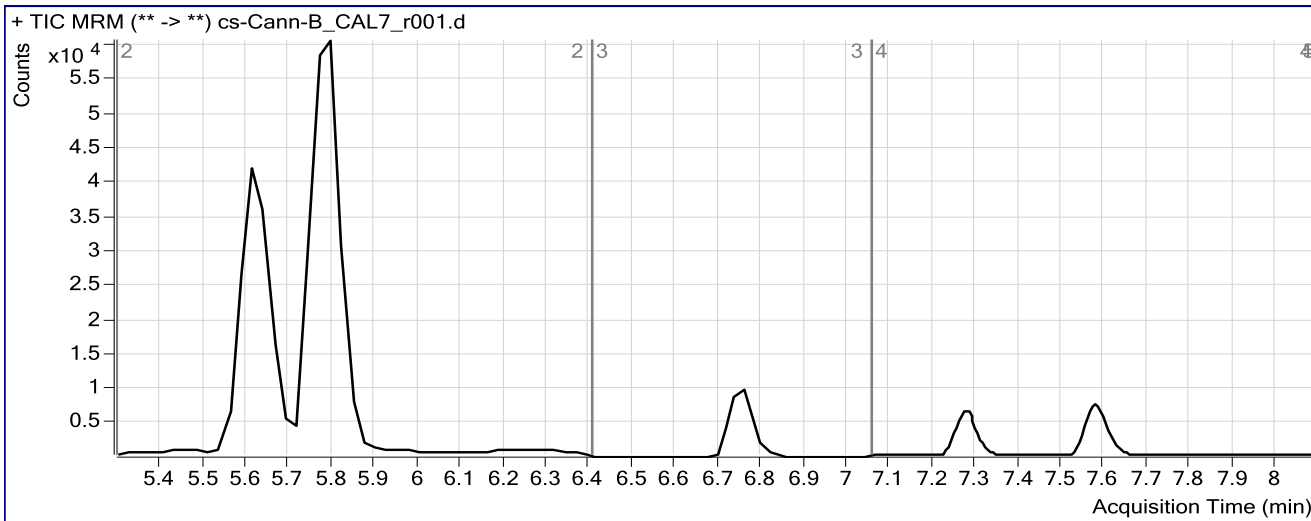
Cannabinoid Analysis Report

Batch Data Path	C:\MassHunter\Data\COMBINED\10-30-15\103015 CS\CANN\QuantResults\103015-CANN-B-CSrevised.batch.b		
Analysis Time	11/3/2015 12:06 PM	Analyst Name	datastor
Report Time	11/3/2015 12:08 PM	Reporter Name	ISPUser
Last Calib Update	11/3/2015 12:06 PM	Batch State	Processed

Analysis Info

Acq Time	2015-10-31 00:22	Data File	cs-Cann-B_CAL7_r001.d
Sample Type	Calibration	Sample Name	Blood: 100_500 ng/mL
Dilution	1	Acq Method	isp cannabinoids 103015.m
Position	P2-A8	Sample Info	c-THC @500ng/mL, all others @100 ng/mL
Inj Vol	-1	Comment	AM 6.1.2 Cannabinoids by LCQQQ

Sample Chromatogram



Results

Compound	ISTD Compound	RT	Response	ISTD Resp	Resp Ratio	Final Conc
OH-THC	OH-THC-d3	5.617	153791	9653	15.9327	99.5359
THC-COOH	THC-COOH-d3	5.796	118512	3046	38.9018	509.0013
CANNABIDIOL	CANNABIDIOL-d3	6.764	18340	1878	9.7647	100.6177
CANNABINOL	CANNABINOL-d3	7.277	13585	1528	8.8902	100.9581
THC	THC-d3	7.576	10412	1199	8.6851	100.8715

ISP FORENSICS

Pocatello

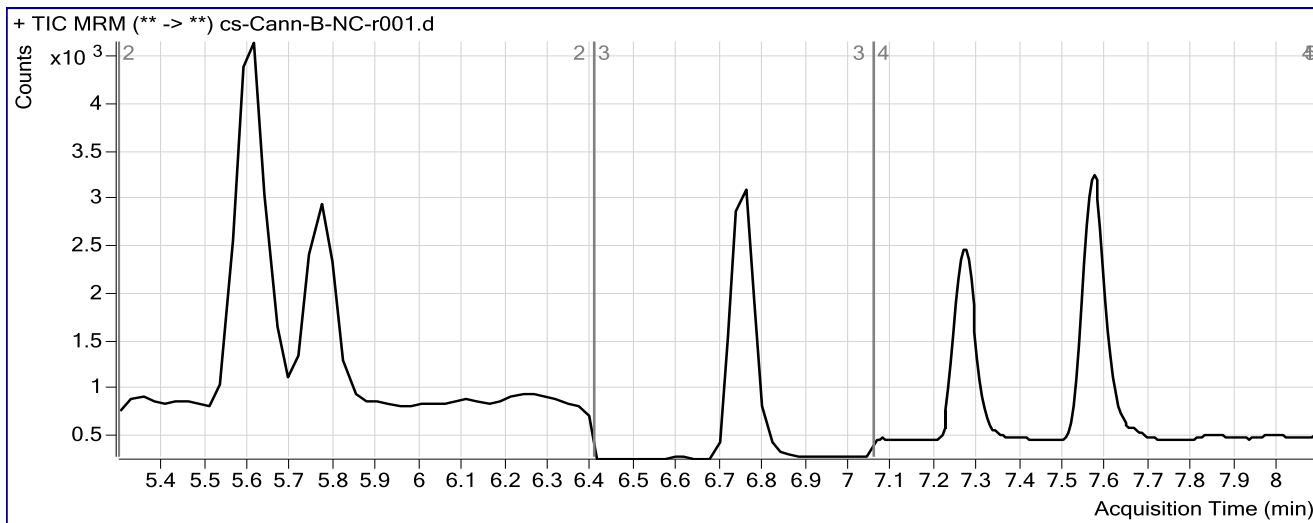
Cannabinoid Analysis Report

Batch Data Path C:\MassHunter\Data\COMBINED\10-30-15\103015 CS\CANN\QuantResults\103015-CANN-B-CSrevised.batch.b
Analysis Time 11/3/2015 12:06 PM **Analyst Name** datastor
Report Time 11/3/2015 12:08 PM **Reporter Name** ISPUser
Last Calib Update 11/3/2015 12:06 PM **Batch State** Processed

Analysis Info

Acq Time 2015-10-31 00:49 **Data File** cs-Cann-B-NC-r001.d
Sample Type Sample **Sample Name** Blood Negative Control
Dilution 1 **Acq Method** isp cannabinoids 103015.m
Position P2-A9 **Sample Info** Negative Blood UTAK Lot B0689
Inj Vol -1 **Comment** AM 6.1.2 Cannabinoids by LCQQQ

Sample Chromatogram



Results

Compound	ISTD Compound	RT	Response	ISTD Resp	Resp Ratio	Final Conc
THC-COOH	THC-COOH-d3	6.237	1708	5364	0.3184	0.0000

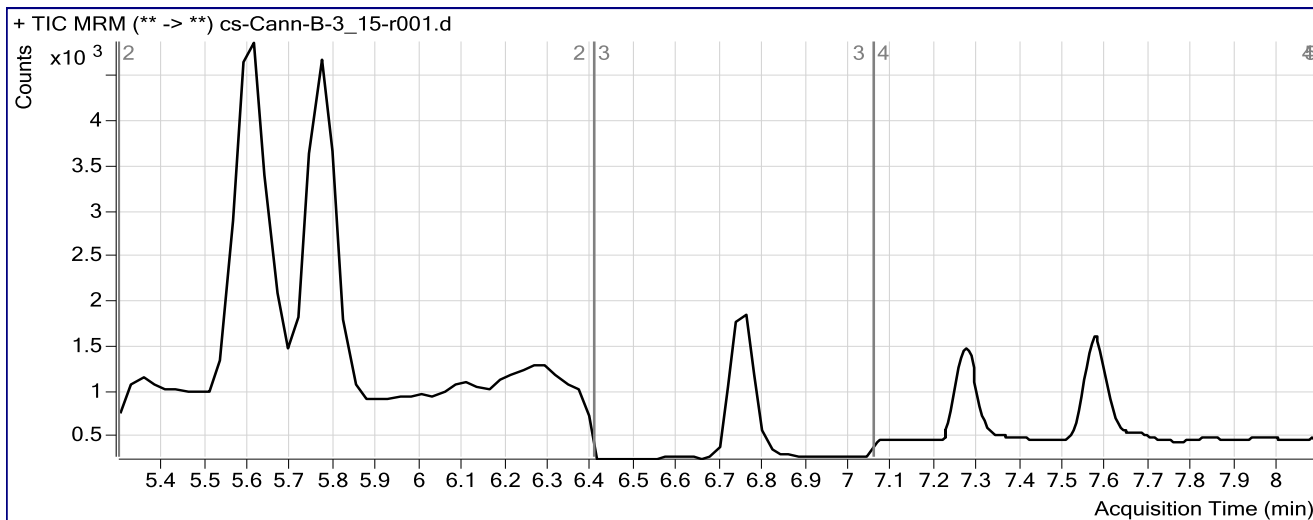
ISP FORENSICS Pocatello Cannabinoid Analysis Report

Batch Data Path C:\MassHunter\Data\COMBINED\10-30-15\103015 CS\CANN\QuantResults\103015-CANN-B-CSrevised.batch.b
Analysis Time 11/3/2015 12:06 PM **Analyst Name** datastor
Report Time 11/3/2015 12:08 PM **Reporter Name** ISPUser
Last Calib Update 11/3/2015 12:06 PM **Batch State** Processed

Analysis Info

Acq Time 2015-10-31 01:02 **Data File** cs-Cann-B-3_15-r001.d
Sample Type Sample **Sample Name** Blood 3_15ng/mL
Dilution 1 **Acq Method** isp cannabinoids 103015.m
Position P2-B1 **Sample Info** c-THC @15ng/mL, all others @3 ng/mL
Inj Vol -1 **Comment** AM 6.1.2 Cannabinoids by LCQQQ

Sample Chromatogram



Results

Compound	ISTD Compound	RT	Response	ISTD Resp	Resp Ratio	Final Conc
OH-THC	OH-THC-d3	5.617	6591	10232	0.6442	3.1024
THC-COOH	THC-COOH-d3	5.770	4965	3692	1.3448	0.0000 *
CANNABIDIOL	CANNABIDIOL-d3	6.764	795	2530	0.3142	3.6888
CANNABINOL	CANNABINOL-d3	7.277	699	2193	0.3189	3.8523
THC	THC-d3	7.582	566	1539	0.3682	4.1617

*Compound was manually integrated. See next page.

11/4/15 5

ISP FORENSICS

Pocatello

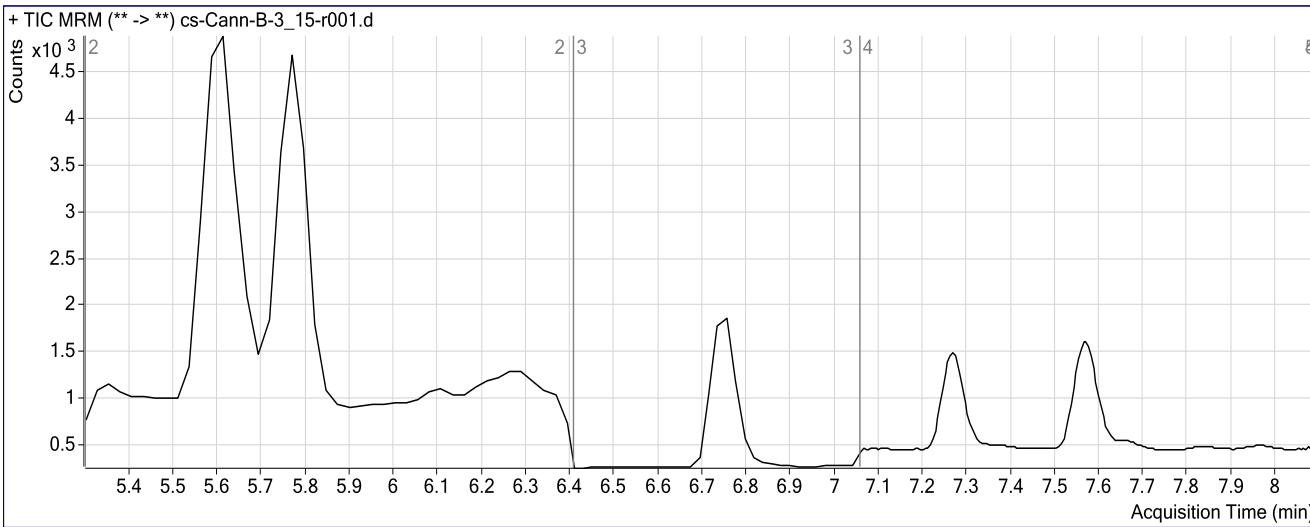
Cannabinoid Analysis Report

Batch Data Path	C:\MassHunter\Data\COMBINED\10-30-15\103015 CS\CANN\QuantResults\103015-CANN-B-CSrevised.batch.b		
Analysis Time	11/4/2015 9:01 AM	Analyst Name	ISPUser
Report Time	11/4/2015 9:07 AM	Reporter Name	datastor
Last Calib Update	11/4/2015 9:01 AM	Batch State	Processed

Analysis Info

Acq Time	2015-10-31 01:02	Data File	cs-Cann-B-3_15-r001.d
Sample Type	Sample	Sample Name	Blood 3_15ngmL
Dilution	1	Acq Method	isp cannabinoids 103015.m
Position	P2-B1	Sample Info	c-THC @15ng/mL, all others @3 ng/mL
Inj Vol	-1	Comment	AM 6.1.2 Cannabinoids by LCQQQ

Sample Chromatogram



Results

Compound	ISTD Compound	RT	Response	ISTD Resp	Resp Ratio	Final Conc
OH-THC	OH-THC-d3	5.617	6591	10232	0.6442	3.1024
THC-COOH	THC-COOH-d3	5.770	9300	3731	2.4927	12.3147
CANNABIDIOL	CANNABIDIOL-d3	6.764	795	2530	0.3142	3.6888
CANNABINOL	CANNABINOL-d3	7.277	699	2193	0.3189	3.8523
THC	THC-d3	7.582	566	1539	0.3682	4.1617

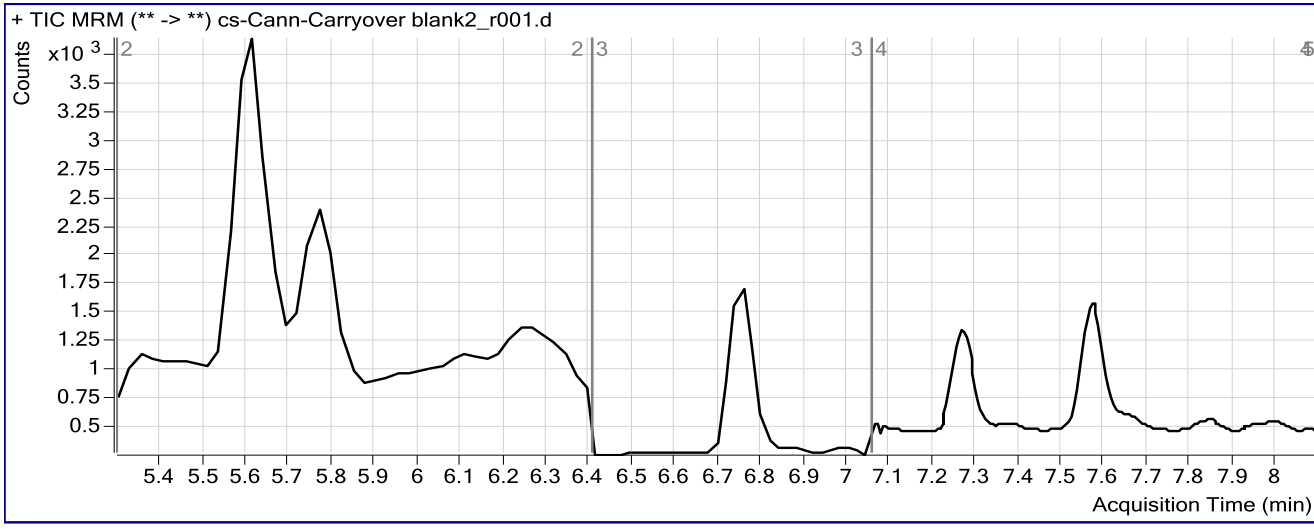
ISP FORENSICS Pocatello Cannabinoid Analysis Report

Batch Data Path C:\MassHunter\Data\COMBINED\10-30-15\103015 CS\CANN\QuantResults\103015-CANN-B-CSrevised.batch.b
Analysis Time 11/3/2015 12:06 PM **Analyst Name** datastor
Report Time 11/3/2015 12:08 PM **Reporter Name** ISPUser
Last Calib Update 11/3/2015 12:06 PM **Batch State** Processed

Analysis Info

Acq Time 2015-10-31 05:39 **Data File** cs-Cann-Carryover blank2_r001.d
Sample Type Blank **Sample Name** Blank
Dilution 1 **Acq Method** isp cannabinoids 103015.m
Position P2-A1 **Sample Info**
Inj Vol -1 **Comment** AM 6.1.2 Cannabinoids by LCQQQ

Sample Chromatogram



Results

Compound	ISTD Compound	RT	Response	ISTD Resp	Resp Ratio	Final Conc
THC-COOH	THC-COOH-d3	5.770	2052	3341	0.6142	0.0000

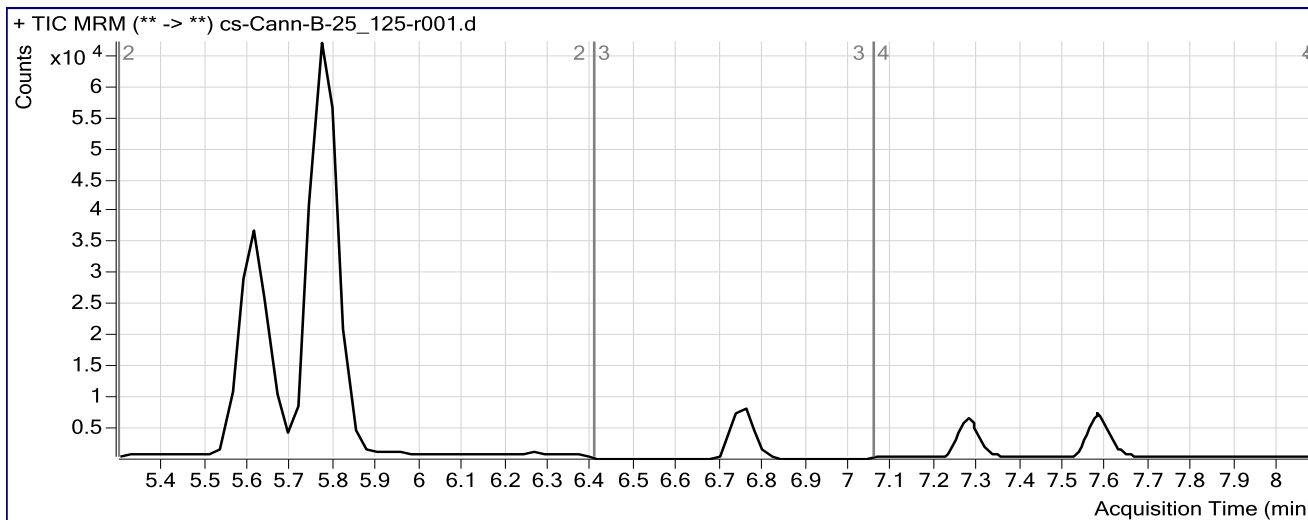
ISP FORENSICS Pocatello Cannabinoid Analysis Report

Batch Data Path C:\MassHunter\Data\COMBINED\10-30-15\103015 CS\CANN\QuantResults\103015-CANN-B-CSrevised.batch.b
Analysis Time 11/3/2015 12:06 PM **Analyst Name** datastor
Report Time 11/3/2015 12:08 PM **Reporter Name** ISPUser
Last Calib Update 11/3/2015 12:06 PM **Batch State** Processed

Analysis Info

Acq Time 2015-10-31 05:52 **Data File** cs-Cann-B-25_125-r001.d
Sample Type Sample **Sample Name** Blood 25_125ng/mL
Dilution 1 **Acq Method** isp cannabinoids 103015.m
Position P2-C3 **Sample Info** c-THC @125ng/mL, all others @25 ng/mL
Inj Vol -1 **Comment** AM 6.1.2 Cannabinoids by LCQQQ

Sample Chromatogram



Results

Compound	ISTD Compound	RT	Response	ISTD Resp	Resp Ratio	Final Conc
OH-THC	OH-THC-d3	5.617	132786	10122	13.1183	81.7834
THC-COOH	THC-COOH-d3	5.770	114298	3322	34.4055	447.6635
CANNABIDIOL	CANNABIDIOL-d3	6.764	14972	2349	6.3733	65.8339
CANNABINOL	CANNABINOL-d3	7.277	13540	1843	7.3463	83.4672
THC	THC-d3	7.576	9524	1505	6.3281	73.4638